

Here is correction of *Figure 1* from original paper published in *Jugoslav Med Biochem* 2002; 21: 339-343.

ALTERATION OF CIRCULATING INSULIN-LIKE GROWTH FACTORS IN PATIENTS INFECTED WITH BACTERIA *HELICOBACTER PYLORI* OR *FRANCISELLA TULARENSIS*

*Ivona Baričević¹, Olgica Nedić¹, Judith Anna Nikolić¹, Slavica Marjanović¹,
Elizabeta Ristanović², Branislav Lako²*

¹*Institute for the Application of Nuclear Energy-INEP, Zemun*
²*Military Medical Academy, Institute of Microbiology, Belgrade*

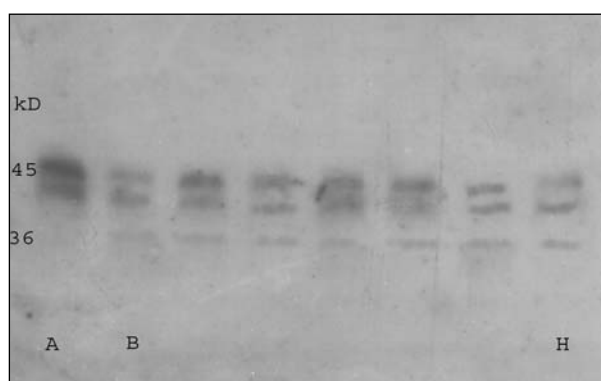


Figure 1. IGFBP profiles in human sera.
A: Serum of healthy person; B-H: Sera of persons
infected with *Helicobacter pylori*